

# Goose Point Restoration Project



COOS BASIN COHO  
**PARTNERSHIP**



**The mission of the Coos Watershed Association is to support environmental integrity and economic stability within the Coos watershed by increasing community capacity to develop, test, promote and implement management practices in the interests of watershed health.**

# Programs



**WATERSHED  
RESTORATION**



**PLANTS**



**MONITORING**

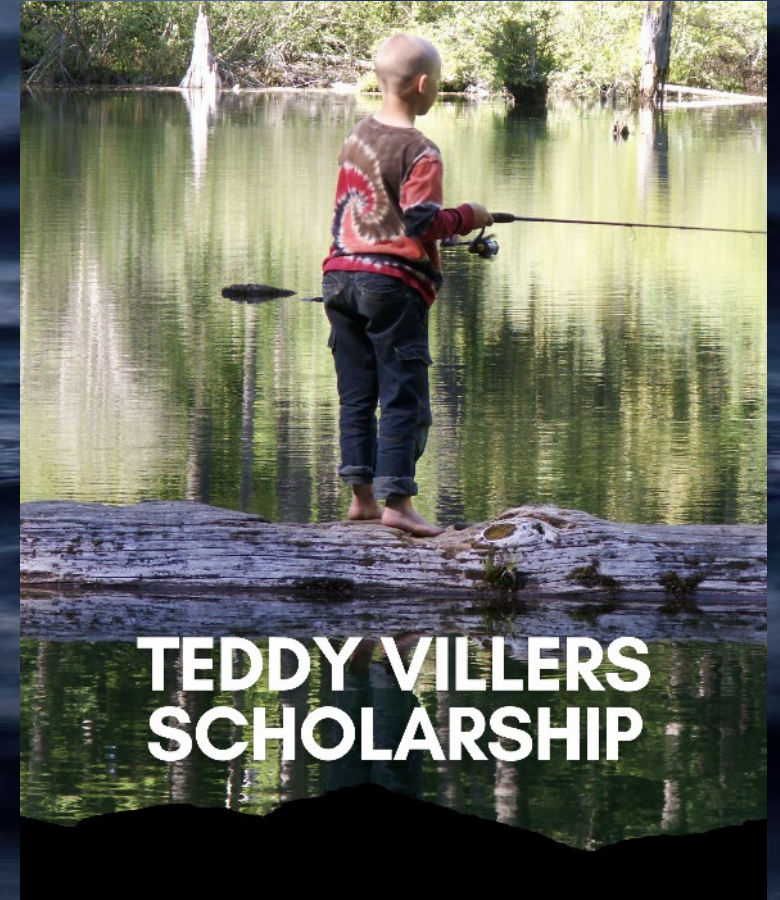
# Programs



**COMMUNITY  
ENGAGEMENT**



**URBAN  
RESTORATION**



**TEDDY VILLERS  
SCHOLARSHIP**



# COOS BASIN COHO PARTNERSHIP

Core belief that healthy ecological, economic, & social conditions are needed to ensure a sustainable future for native Coho salmon through highly connected, functional, and productive landscapes.

**\$11 million over 6-years, with an additional \$10 million investment from partners**



Oregon Watershed  
Enhancement Board  
Focused Investment  
Portfolio Award



Strategic Action Plan  
for Coho Salmon Recovery

*~ The Coos Basin ~*





COOS SWCD

# Collaboration is Key!



Weyerhaeuser



# Goose Point Restoration Project

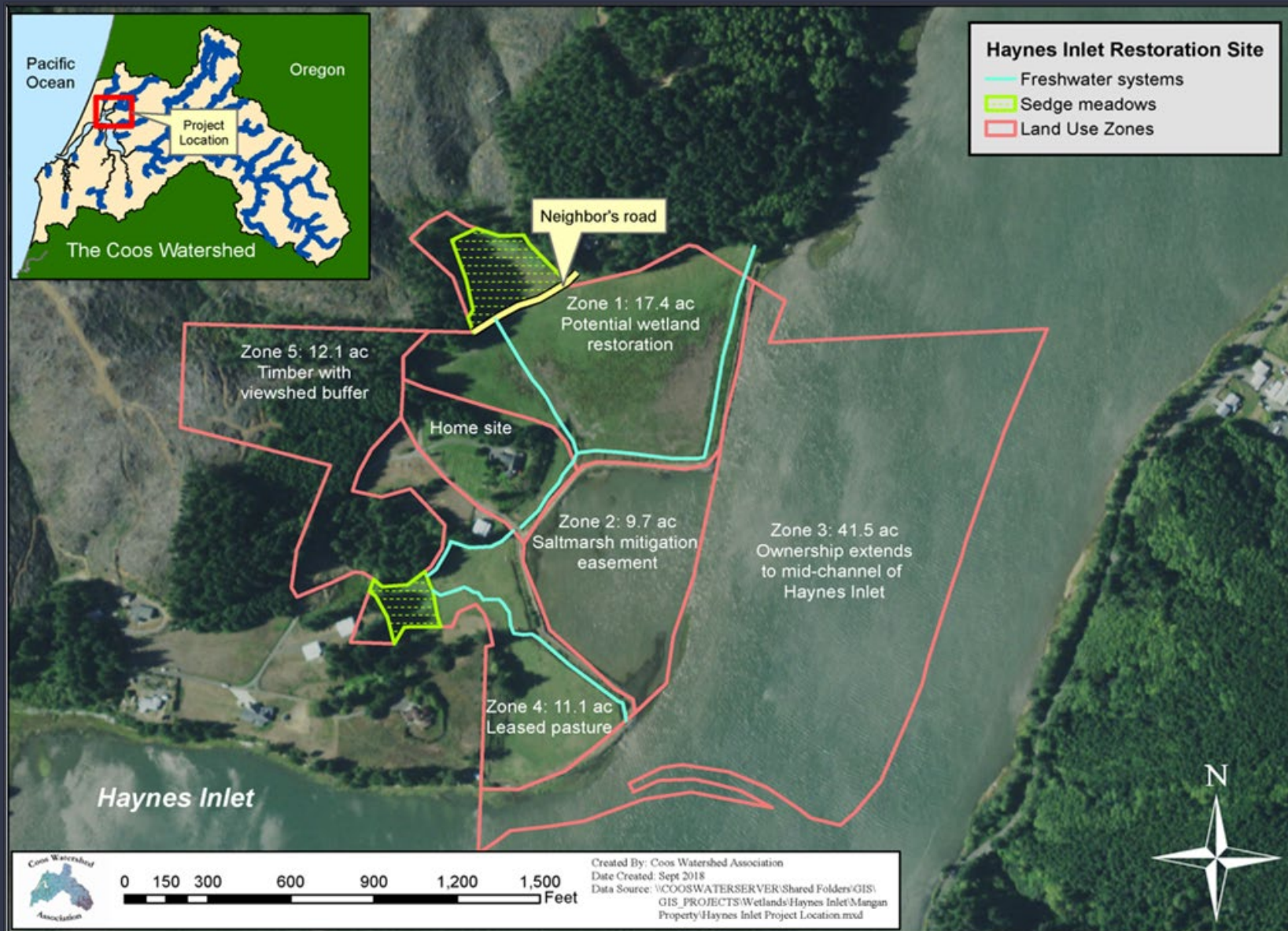


COOS BASIN COHO  
**PARTNERSHIP**



**Project location**





# Project location



# Project goal

**This project seeks to provide rearing habitat for juvenile salmon by enhancing and creating a wetland complex that is compatible with the agricultural land use.**



# Restoration Actions

- Creating ~5 acres of off-channel wetland habitat, including 0.35 miles of tidal channel, critical rearing habitat for juvenile salmon
- Establish planting hummocks, pools, and shallow ponds to create habitat heterogeneity
- 0.7 miles of livestock exclusion fencing and off-channel water source development
- **Improve fish access and water quality by adding PET door to current tide gate**



**30% DESIGN**

Unauthorized Changes & Uses  
 The engineer preparing these plans will not be responsible for, or liable for, unauthorized changes to or uses of these plans. All changes must be in writing and must be approved by the preparer of these plans.

REVISIONS			
REV. NO.	DESCRIPTION	DATE	APPROVED



**DUCKS  
UNLIMITED**

PROJECT NO. US-08-280-1     DATE 10/22/23

**GOOSE POINT  
HAYNES INLET  
SALT MARSH ENHANCEMENT**

SITE PLAN

DESIGNED BY: JCL  
 CHECKED BY: JCL  
 DRAWN BY: JCL

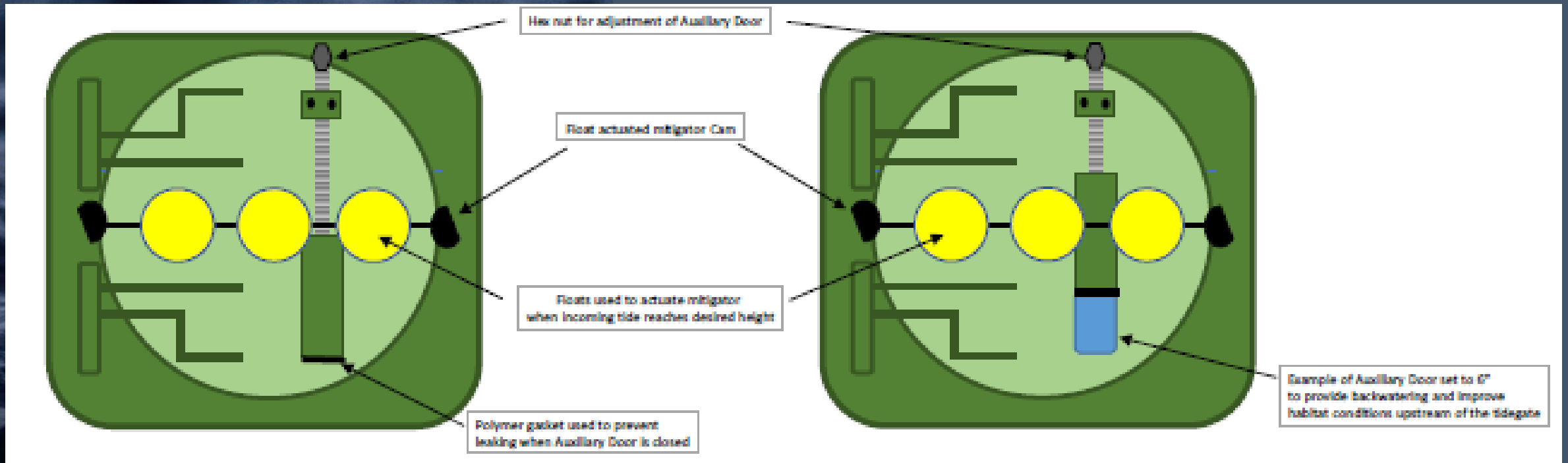
**5 of 7**

# Design Overview



- Tide gates installed as part of airport mitigation in 2011
- Modern, side hinge gates with mitigator
- Auxiliary door (pet door) would allow for enhanced tidal exchange upstream of tide gate, ecologically beneficial to restoration project
- Simple exchange of existing door for one with auxiliary door.
- If need be, pet door can be fully shut and new door will function identically to old door.

# Tide gate modification proposal



# Tide gate modification pet door



**Pet door will be managed by landowner in accordance with the water management plan so that adjustments to the auxiliary door can achieve optimal fish benefits throughout the seasons, without negatively impacting adjacent lands.**

**No impacts to airport mitigation site.**



# **Tide Gate Modification**



# Request

**Allow us to modify the current tide, replacing existing gate door with one that includes PET door**





# Project Timeline

01

**Finish design and  
secure permits.**

**January – May 2025**

02

**Construction**

**July 1 – September 15, 2025**

03

**Monitor**

**2025 - 2027**

Coos Watershed  
Association



**COOS**  
Watershed  
Association